

B.E.E.P.

Broom Education and Eradication Program (BEEP) is a Forest Ranch community action group formed in December, 2006 for the purpose of controlling broom infestations in the community. **Forest Ranch** is a foothills community and therefore concerned about fire danger. Since broom increases the threat of fire, removal is a high priority. **BEEP** has become an affiliate of the **Big Chico Creek Watershed Alliance**.



Volunteers at work

GET INVOLVED !

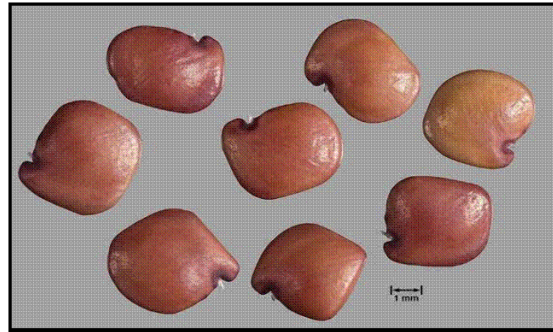
- Report broom infestations
- Get help removing broom
- Ask how...

YOU CAN HELP !

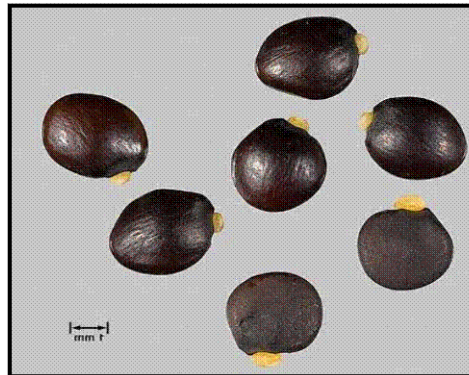
For more information on the Forest Ranch Broom Education and Eradication Program, contact **BEEP** at:
(530) 892-8726

For more information about invasive broom, including additional eradication methods and information on replacement plants, visit:

Broom Education and Eradication Program (BEEP)
at:
www.bigchicocreek.org



Spanish Broom Seeds



French Broom Seeds

This Brochure Funded by:

BEEP

Big Chico Creek Watershed Alliance
California Native Plant Society,
Mt. Lassen Chapter
Butte County Fire-Safe Council

Rev. 6-18-08

Sweep Out Broom!



What is Broom?

- Broom plants were introduced in California around 1850 as ornamental plants in gardens. Later, when the California highway system began to develop, they were used to control erosion along the road banks. Broom is now recognized as a problem and is no longer used by government agencies.
- Broom is an exotic invasive plant, which means that it came to California from another area (Europe) and now out-competes the native plants for dominance. In Forest Ranch, there are two types of broom: Spanish and French.
- Broom is an evergreen shrub that has clusters of yellow flowers that bloom in the late spring.



Spanish Broom

- Broom is spread by seed. A mature broom plant can produce thousands of seeds each year. The seeds are extremely long-lived and can germinate years after they've been dispersed.
- Once broom takes hold in an area, the native plants are unable to survive.

Residents Beware!

Did you know that broom plants are a fire hazard?

The volatile oils in the stems, as well as the dead inner stems that die back as part of the growing process, create a highly flammable fuel. Broom also acts as a ladder fuel, carrying fire into the tree canopy layer.

Did you know that broom is detrimental to wildlife because it destroys habitat?

Animals seldom use broom for shelter and they are unable to use it as a food source because all parts of the plant are toxic.

Did you know that broom seeds are long- lived and excellent travelers?

The broom seeds are dispersed several feet from the plant and their hard coats enable them to travel down waterways and in tire and shoe treads. They can germinate after 15 years or more. For example, broom seeds along Highway 32 in Forest Ranch can wash down ravines into Big Chico Creek and germinate 10 years later in a gravel bar in Lindo Channel.



French Broom seed pods

Broom Control

Removal: Removal of the entire broom plant is the ultimate goal. Hand-pulling is successful for smaller plants and seedlings when the soil is moist during the rainy season. A Weed Wrench™ is a good tool for removing larger plants. Sometimes the plants are so large that they require a winch or must be dug out below the crown. It is important to get as much of the root system as possible to prevent re-sprouting.

Seeds: Seeds must not be allowed to mature. If unable to remove the entire plant right away, cut the flowers off before they form seeds. Be sure to leave at least a foot of stem above the ground so it can be gripped for removal during the next rainy season. The key to long term broom control is the prevention of seed maturation.

*French
Broom
Seedling*



Seedlings: Seedlings will appear after the winter rains. These can be pulled by hand or sprayed carefully with glyphosate (e.g.: Roundup™). Since broom seed banks are long-lived, plan on being vigilant for several years.

Re-Vegetation: Replanting with fire resistant plants will make it difficult for the broom seed bank to germinate and grow.